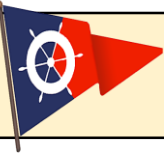


QUARTERMASTER YACHT CLUB – Anchoring Tech Talk

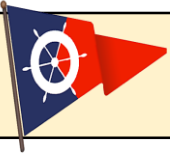
Anchoring, basics & beyond – Project Data

Title:	Anchoring techniques – basics and beyond
Objective:	Discuss both recreational and safety uses of anchors, ground tackle and anchoring techniques
Speaker(s):	Bob Underwood
QYC Only?:	No
Date:	11 Jan, 2017
Time:	7 – 9 PM
Duration:	90 minutes ?
Location:	Vashon Library (Meyers Hut as backup)
Space Required:	Room with tables, chairs and projection screen
Supplies to bring:	Laptop and power cable, projector and power cable, laptop to projector cable
Tools to bring:	None
Props & Examples:	None
Advertising plan:	Advertise tech talk w/ flyer at QMM, library, grocery store, HW store, Burton Boat, QYC (Meyers Hut, top of hill bulletin board, dock gate), preview at QYC meeting



Anchoring, basics & beyond – Agenda

- 7:00 Welcome / Overview / Introduce experts
- 7:10 Ground Tackle Hardware
- 7:25 Anchoring Procedure – Location Selection
- 7:40 Anchoring Procedure – setting and retrieving the anchor - basics
- 8:00 Unique Situations
- 8:15 Emergency Situations
- 8:30 Questions?
- 8:45 Complete surveys
- 8:50 Start teardown
- 9:00 Depart



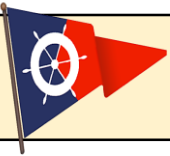
QUARTERMASTER YACHT CLUB – Tech Talk Introduction

WELCOME to QYC Tech Talks!

- A Tech Talk is...
 - An exchange of information, ideas and experience
 - More dialogue than “teaching”
 - A little structure
- We encourage...
 - Listening, learning & contributing
 - Discussion and debate
 - Questions
- Our next Tech Talk is:
 - 8 Feb at 7PM – Boat Handling



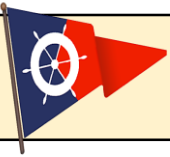
Together, to Learn From Each Other



Anchoring, basics & beyond - Overview

- Ground Tackle HW
- Anchoring Procedure
 - Location Selection
 - Setting the Anchor
 - Anchor Retrieval
 - Unique Situations
- Emergency Situations





Anchoring, basics & beyond - Anchors



Rockna



Delta



Bruce / Claw



CQR



Vulcan



Danforth / Fluke



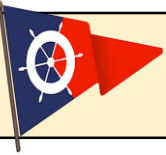
Stockless



Folding



Mushroom



Anchoring, basics & beyond - Windlasses



Vertical Line / Chain



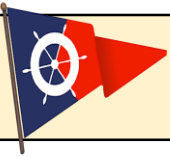
Horizontal Line / Chain



Capstan



Horizontal All Chain



Anchoring, basics & beyond - Rode



Chain



Line / Chain



Line Only



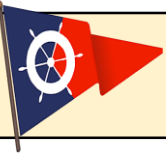
Shackles



Swivels



Recommend: Chain length no less than boat length

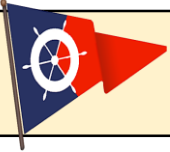


Anchoring, basics & beyond – Other Stuff



Bridle

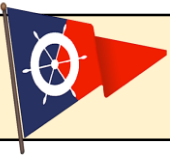
- Component sizing
- Inspection
- ALWAYS –
Securely tie the
end of the rode to
the boat!



Anchoring – Location Selection

- Research
- Where to drop the anchor?
- How close to other boats?
- Scope calculation
- [Anchor setting application](#)





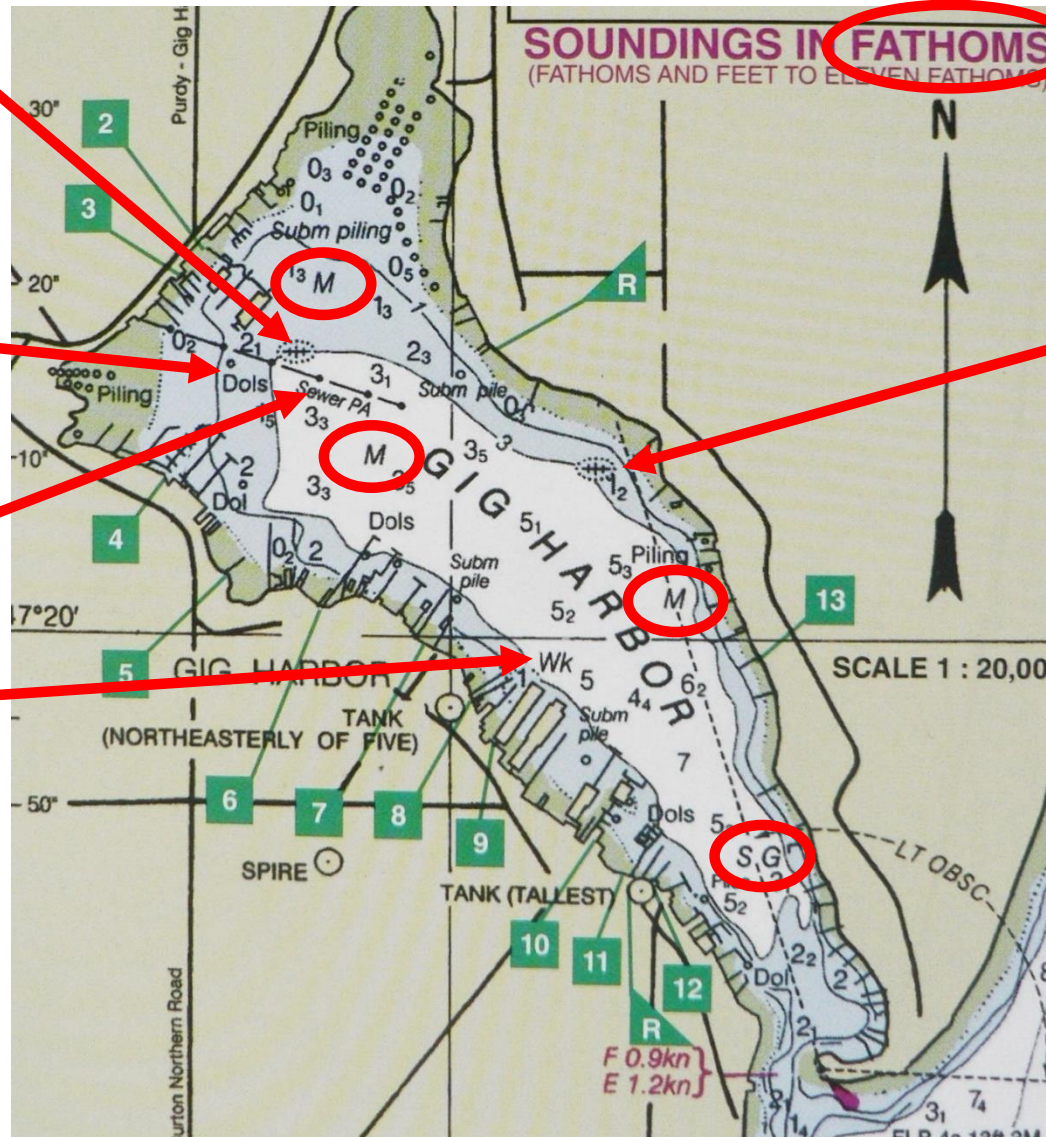
Anchoring – Location Selection

Submerged Wreck

Obstruction

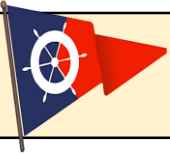
Submerged Pipe

Wreck

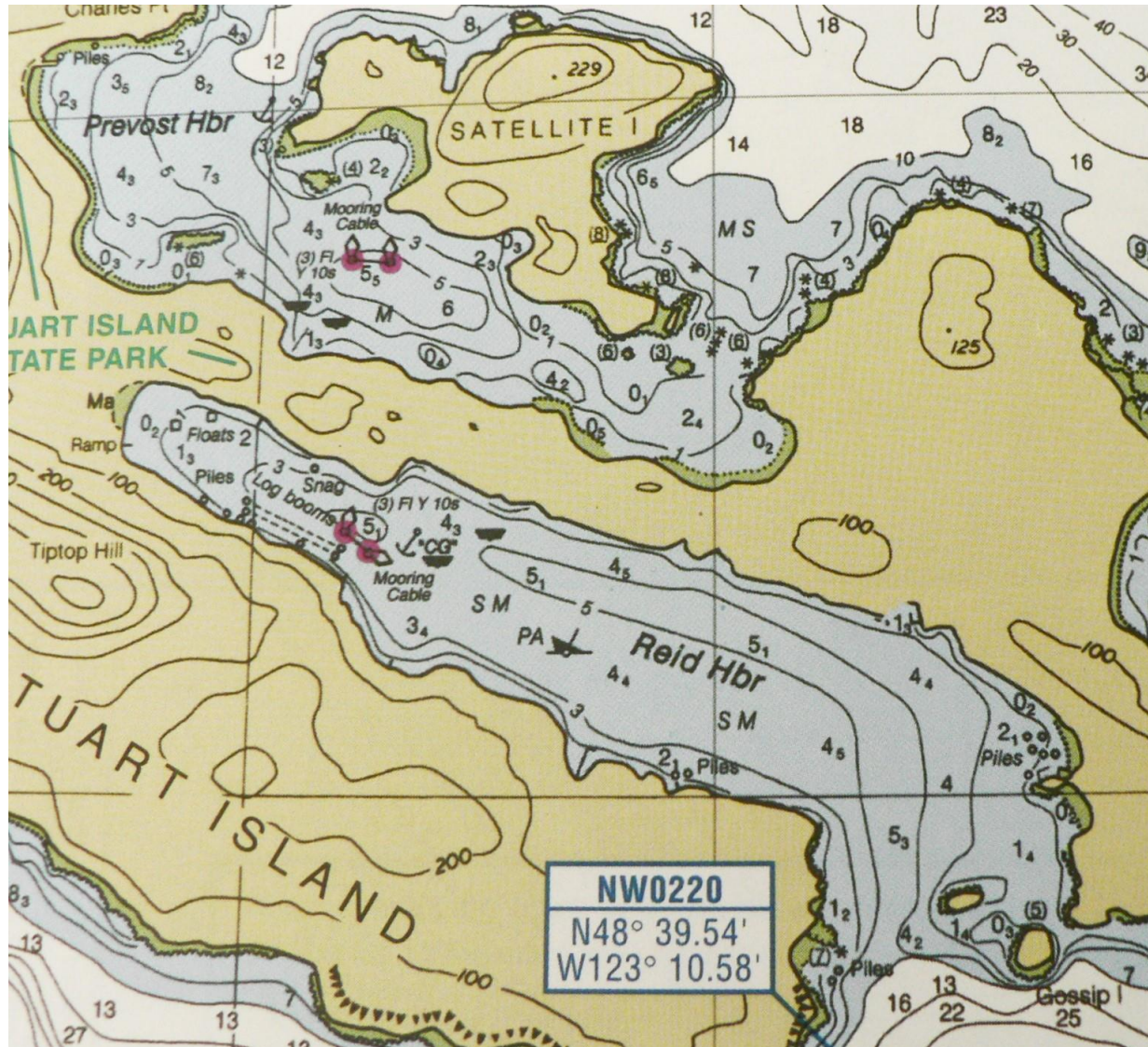


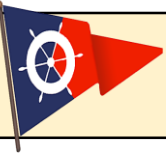
Submerged Wreck

F 0.9kn
E 1.2kn



Anchoring – Location Selection





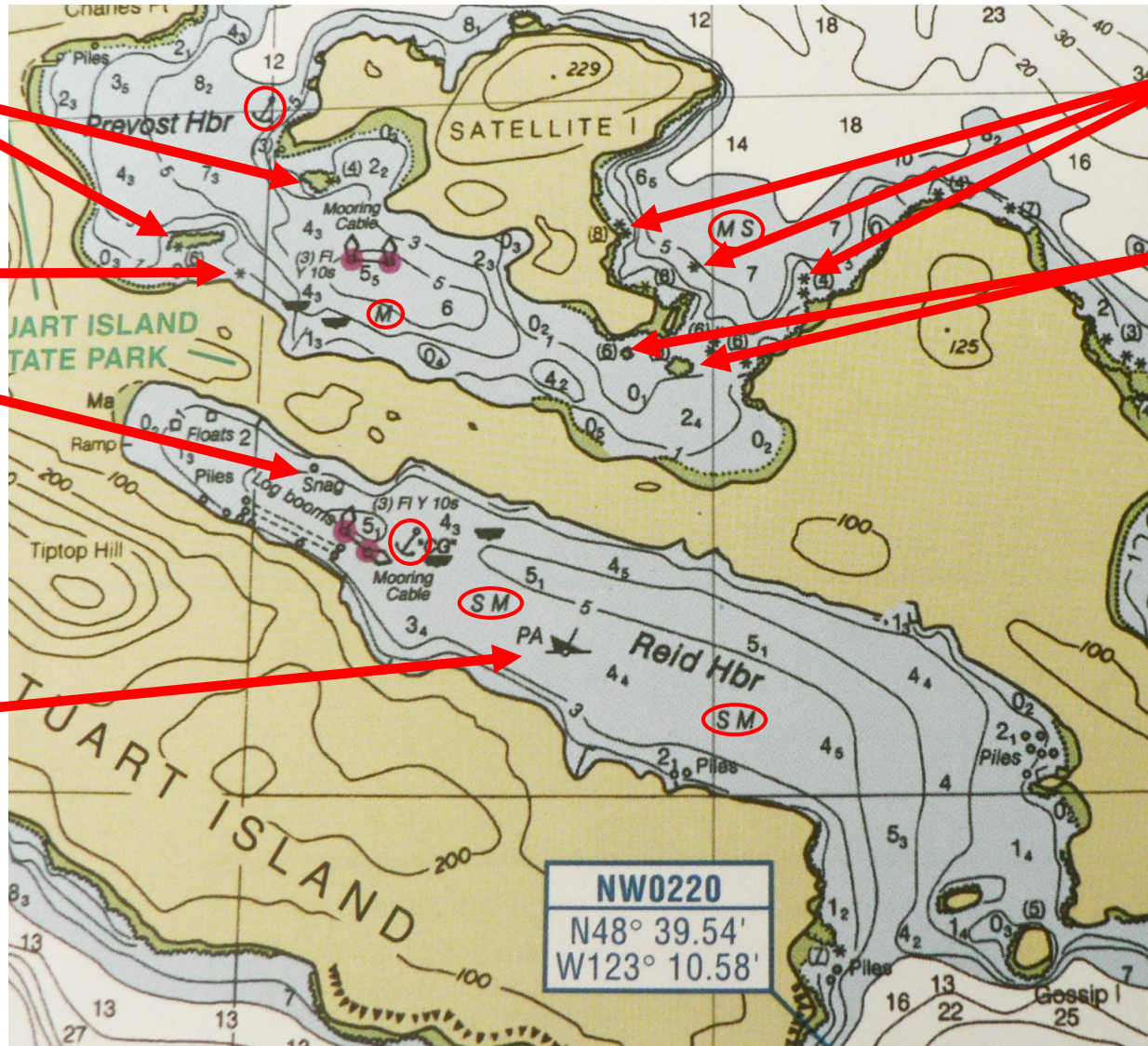
Anchoring – Location Selection

Shoals

Rock

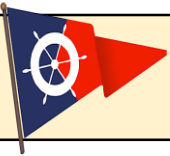
Snag

Wreck
Position
Approximate



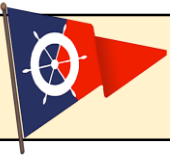
Rocks

Shoals



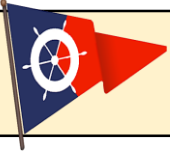
Anchoring – Setting the Anchor

- Power on windlass if equipped
- Free the anchor for dropping
- Identify candidate locations based on the other boats in the anchorage
- Cruise over the selected anchor location + swing room checking depths / obstructions
- Final anchor drop selection - mark on chart plotter or take visual bearings from landmarks or other boats
- Bring boat to a stop at the anchor drop site
- Lower anchor while backing the boat in the direction you want your chain to lie
- When adequate rode deployed, tie off rode and continue backing down until anchor sets (boat motion stops)
- Attach bridle if equipped
- Power off windlass if equipped
- Take radar, visual or magnetic "range bearings" on fixed (not floating) landmarks or set anchor alarm
- Check location periodically for anchor drag



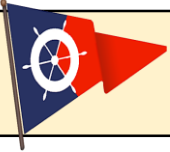
Anchoring – Retrieving the Anchor

- Start engine - get batteries on alternator power
- Power on windlass if equipped
- Remove bridle and release rode from tie off point on boat
- Motor toward anchor while pulling in rode - care not to over-run anchor
- Anchor should lift off the bottom
 - If not, secure the rode to the boat and run past the anchor drop point
 - If that does not break anchor free...
 - try running past the anchor drop point in different directions
 - try colorful language while kicking yourself for not rigging an anchor trip line
 - try securing anchor to boat and waiting for rising tide
- consider cutting anchor line and hiring a diver
- Lift anchor and secure
- Power off windlass if equipped



Anchoring – Unique Situations

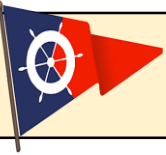
- Fouled bottom - anchor trip line options
- Different bottom material
- Steep-to anchorages
- Stern tie
- Multiple anchors



Anchoring – Emergency Situations

- Recommended procedures
- Kedging / Warping
- Drogues / Sea anchors

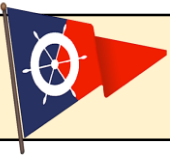




QUARTERMASTER YACHT CLUB – Anchoring Tech Talk

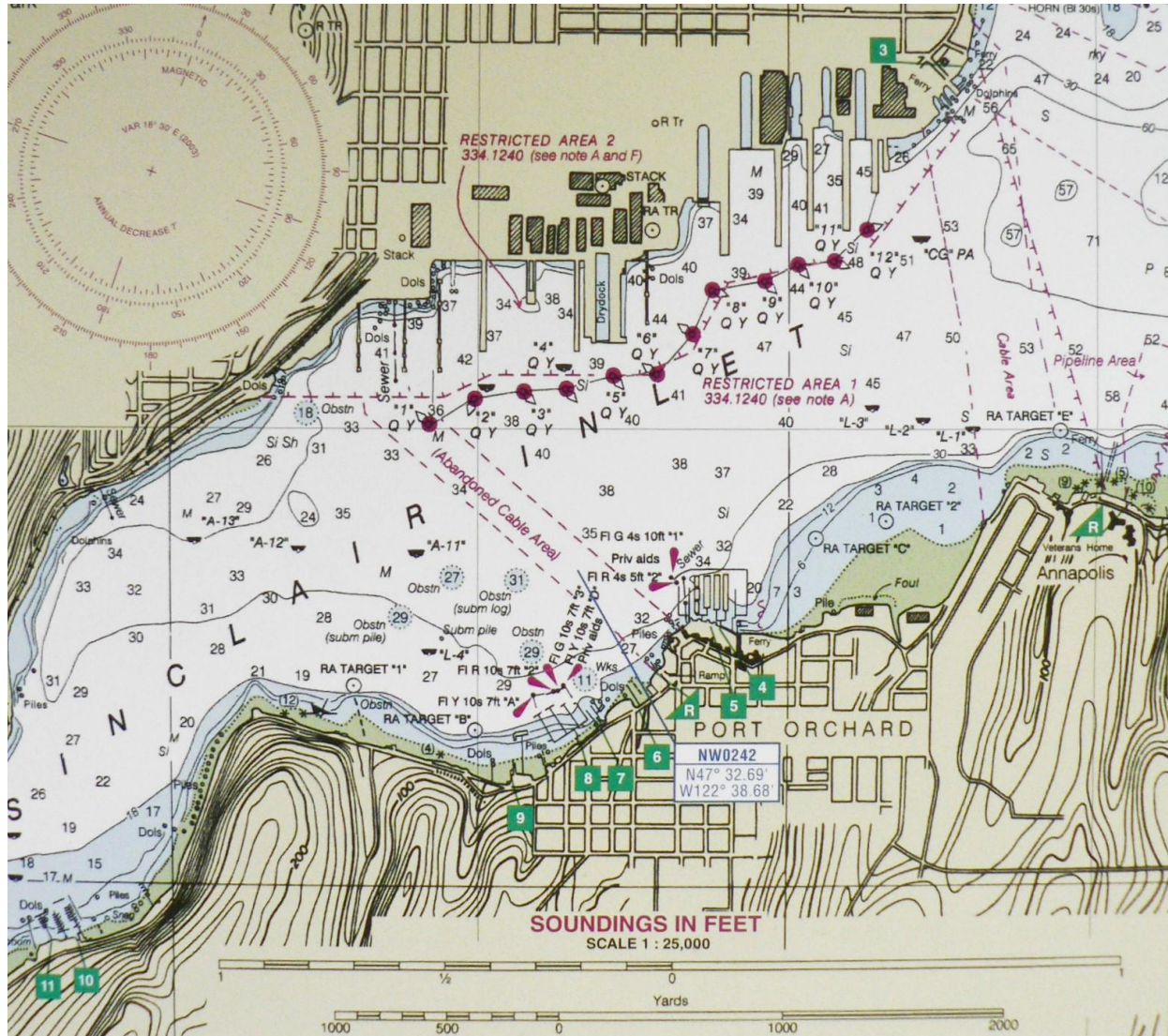
Anchoring, basics & beyond

QUESTIONS?



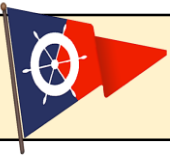
QUARTERMASTER YACHT CLUB – Anchoring Tech Talk

Anchoring – Location Selection

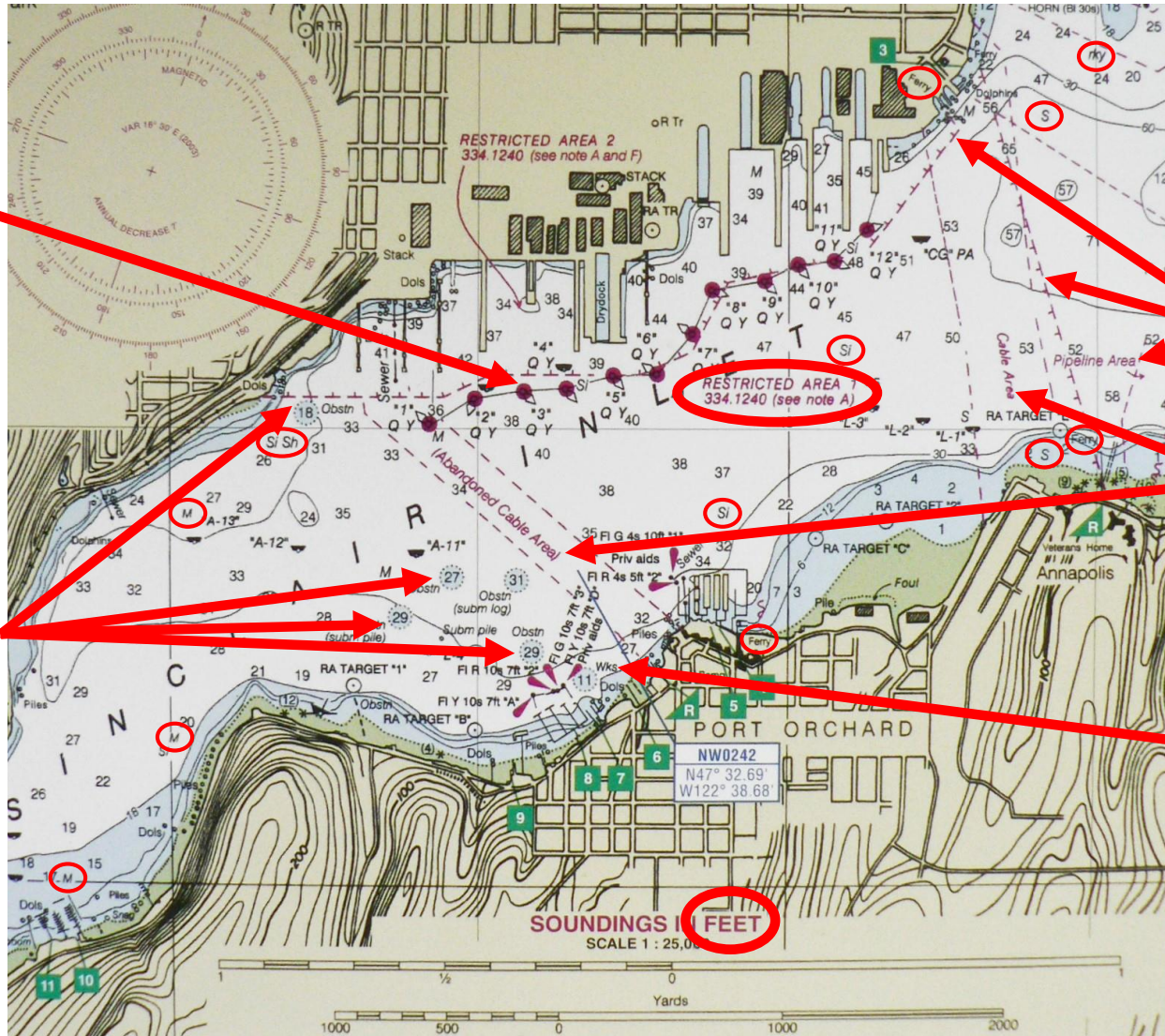


NOTE A
Navigation regulations are published in Chapter 2, U.S. Coast Pilot 7. Additions or revisions to Chapter 2 are published in the Notice to Mariners. Information concerning the regulations may be obtained at the Office of the Commander, 13th Coast Guard District in Seattle, Washington or at the Office of the District Engineer, Corps of Engineers in Seattle, Washington.
Refer to charted regulation section numbers.

NOTE F
Floating security barriers have been installed at various U.S. Naval installations throughout Puget Sound. The barriers are marked by numerous quick flashing yellow (Q Y) lights and approximately mark the Restricted Areas surrounding the facility. (CFR 334.1240 add Bremerton restricted area/security area)



Anchoring – Location Selection



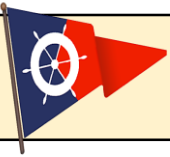
Floating Barricades

Obstructions

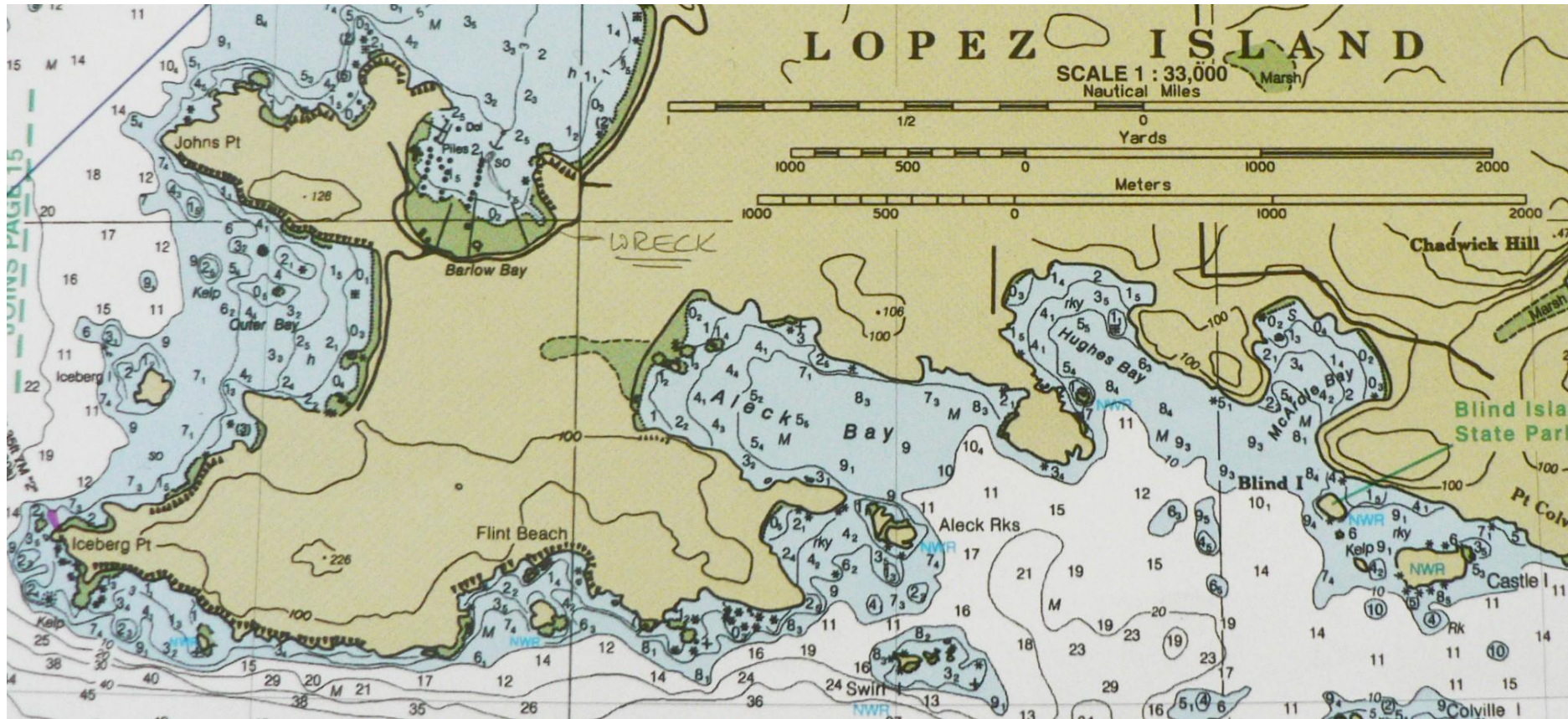
Pipelines

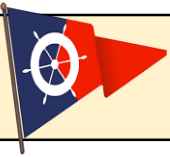
Cable Area

Wrecks

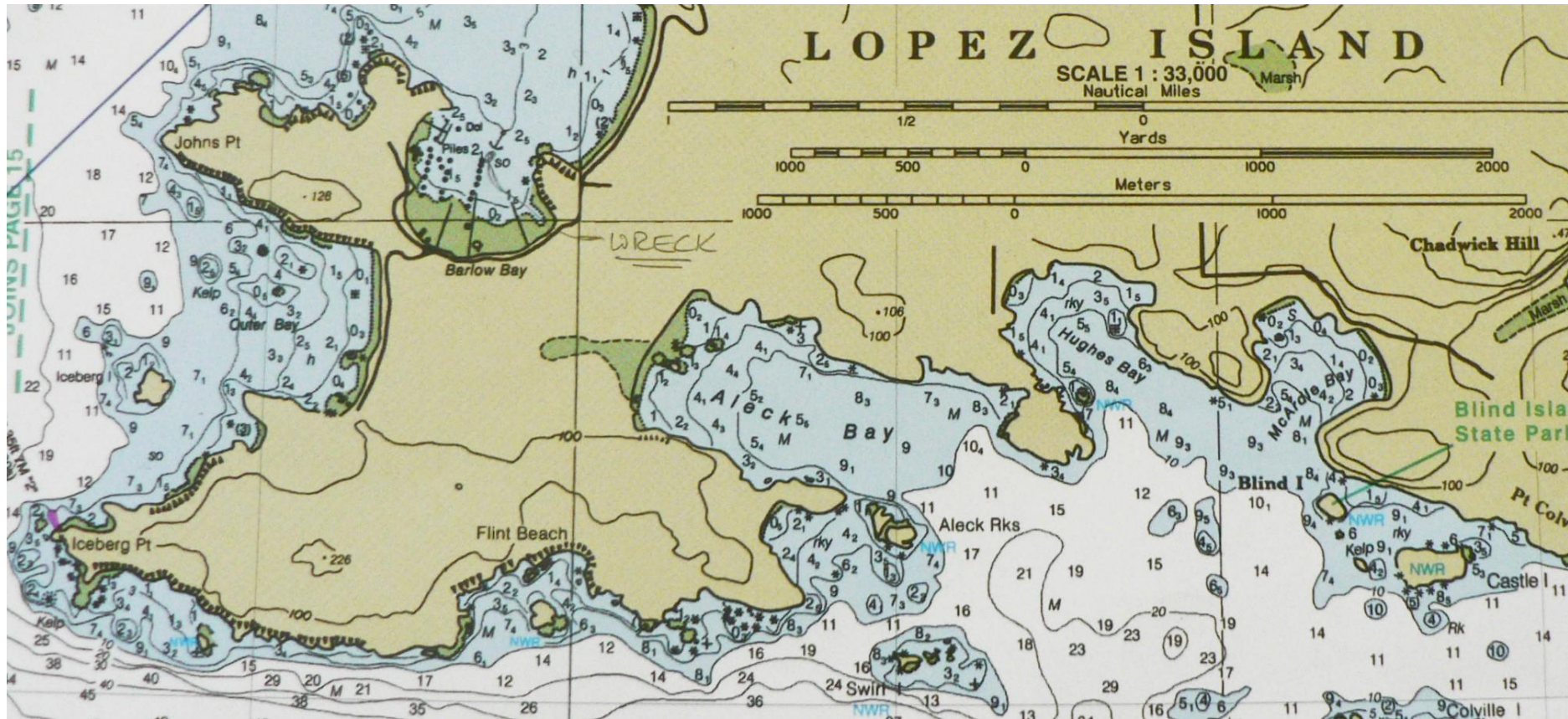


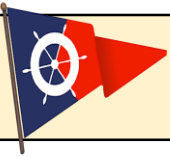
Anchoring – Location Selection



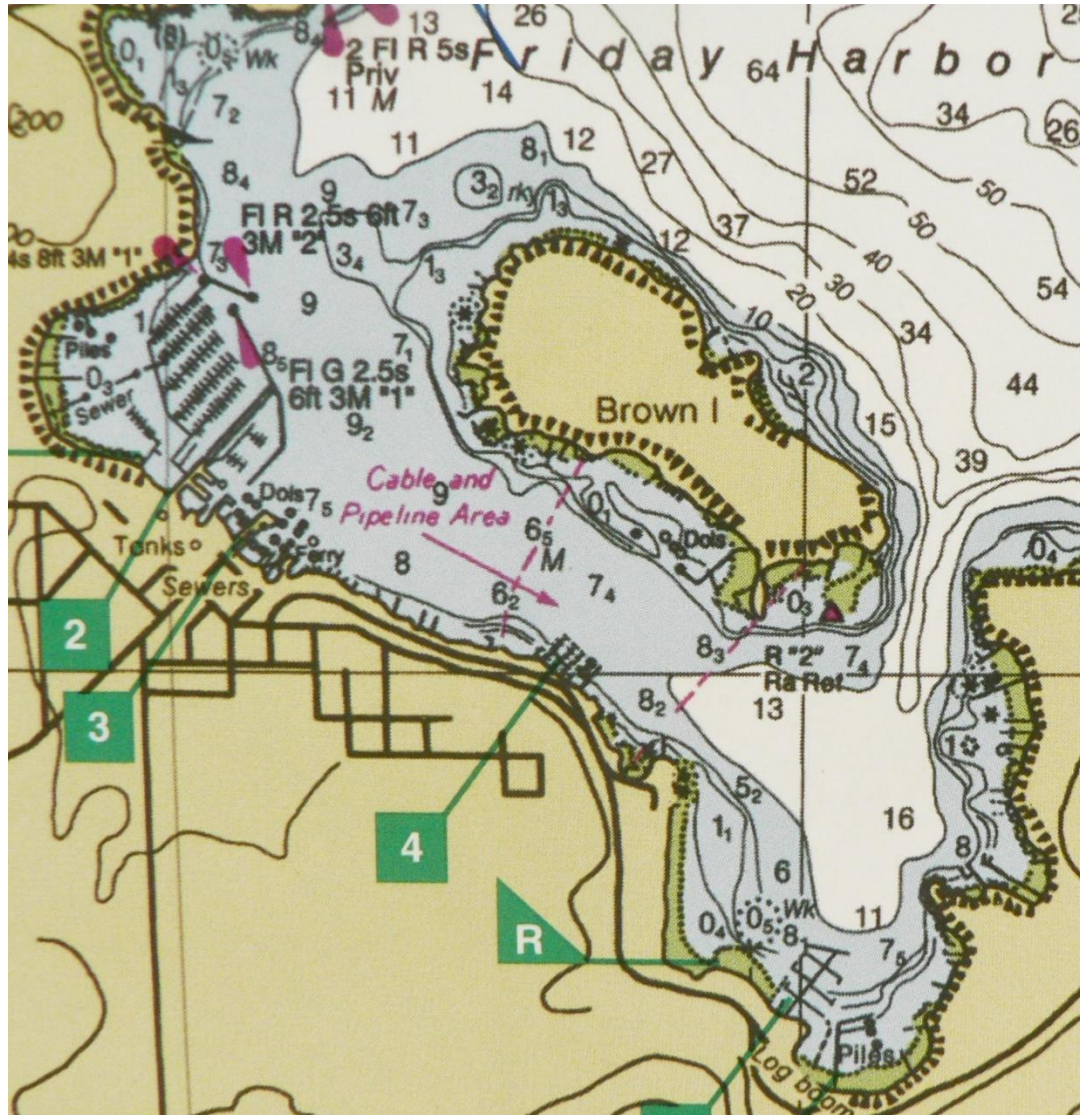


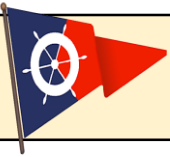
Anchoring – Location Selection



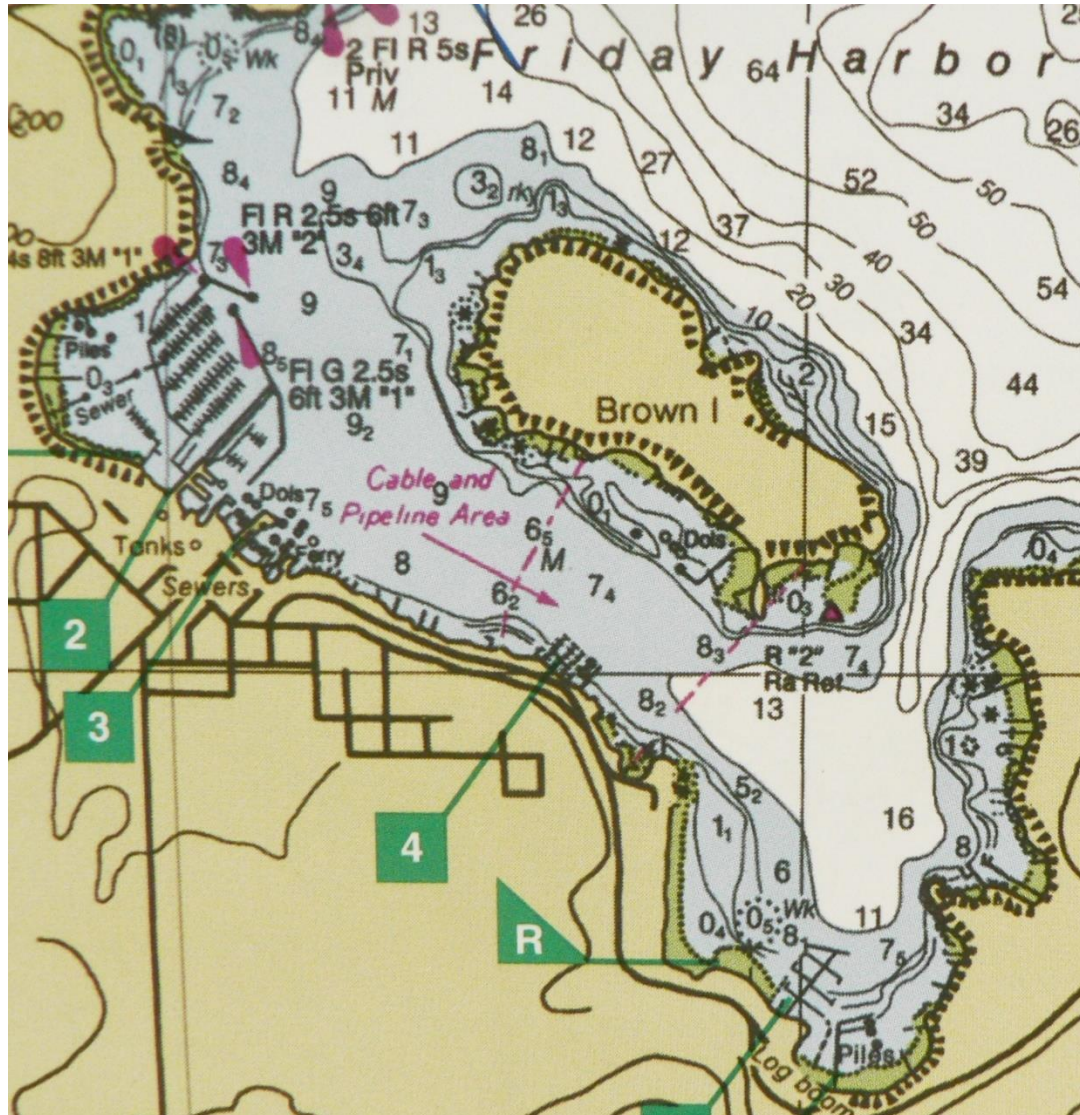


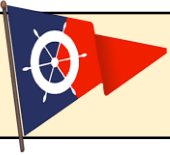
Anchoring – Location Selection





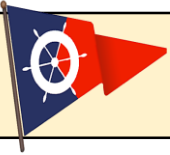
Anchoring – Location Selection





Anchoring – Location Selection





Anchoring – Location Selection

